

## C149 Function 15 Installation

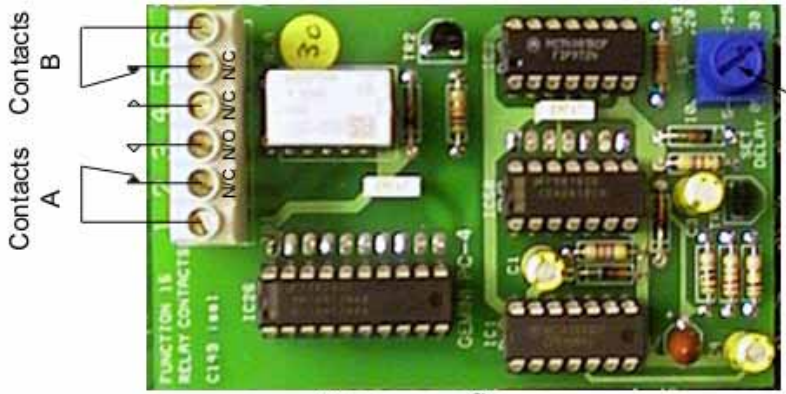
- Power automation unit off using the main switch and open the front panel
- Locate the logic board, mounted on the inside of the front panel
- Locate and remove IC 26 and IC 58
- Replace IC 26 and IC 58 into the function module's empty IC sockets
- Insert the function module into the logic board. The module has pins that fit directly into the empty sockets of IC 26 and IC 58
- Adjust VR1 (blue knob) to give time delay (0-30 sec range on function 10)
- Connect the sound switch contacts (function 15 controlled)



Remove IC 26 and IC 58



Once the IC's are inserted, the Function 15 module must be inserted into the empty IC 58 sockets on the logic board



Contacts A  
Contacts B

VR1  
Adjust to give time delay (0-30s range on function 10)

Locate the empty IC sockets marked IC 26 and IC 58 and insert the two IC's that were removed earlier, making sure to line up the dot on the IC with the recess on the socket.