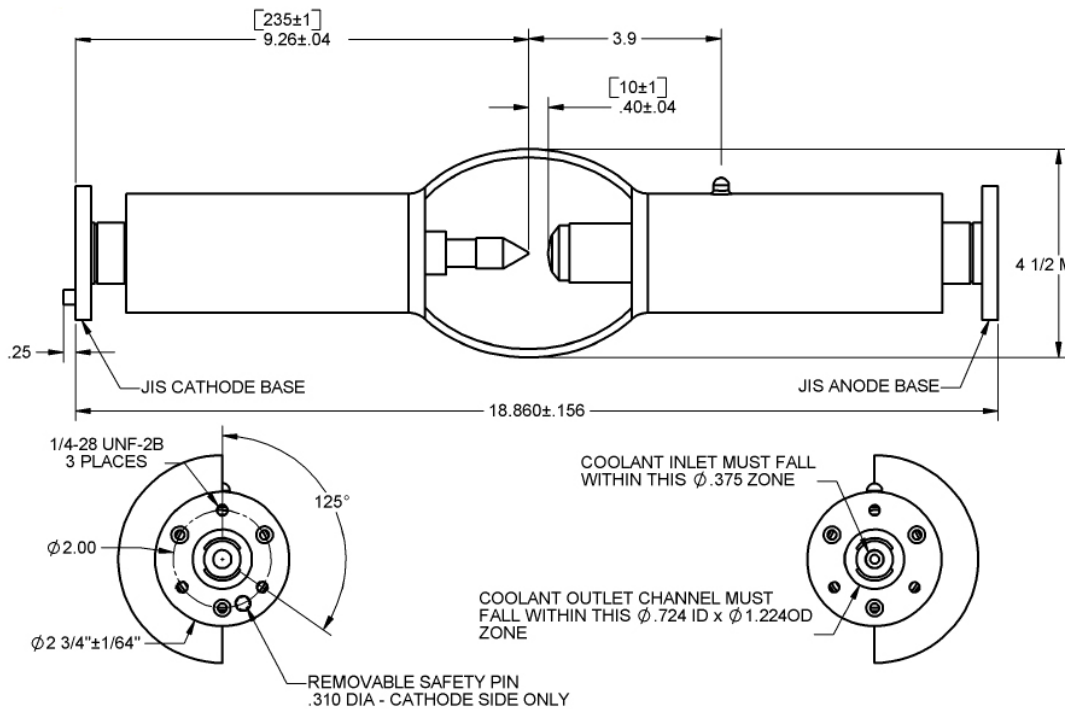




**TLS UK**  
 Technical Lamp Supplies UK Ltd  
 108 Windsor Road, Slough,  
 SL1 2JA. (UK)  
 Tel: ++44 (0) 1753 576888  
 Fax: ++44 (0) 1753 575113  
 Email: sales@tlsuk.com  
 Website: www.tlsuk.com

# SX15000-1 Approved IMAX 15KW xenon lamp

A direct replacement for the USHIO UXW-15KD



TECHNICAL SPECIFICATIONS	
WATTAGE (W)	15000
VOLTAGE (VDC)	37.5 ± 2.5
NOMINAL CURRENT (A)	400
STANDBY CURRENT (A)	270
WARRANTY HOURS (H)	1200
WARRANTY STRIKES	300
INTENSITY (Cd/mm <sup>2</sup> )	
PEAK BRIGHTNESS (over a circular area of 0.25mm DIA. in front of cathode tip)	8300
AVERAGE BRIGHTNESS (over a circular area of 2mm DIA. In front of cathode tip)	4200
AVERAGE BRIGHTNESS (over a rectangular area of 6.5mm x 3mm in front of cathode tip)	1850



**TLS UK**  
 Technical Lamp Supplies UK Ltd  
 108 Windsor Road, Slough,  
 SL1 2JA. (UK)  
 Tel: ++44 (0) 1753 576888  
 Fax: ++44 (0) 1753 575113  
 Email: sales@tlsuk.com  
 Website: www.tlsuk.com

<b>COOLANT DATA</b>	
De-ionised or distilled water, with a maintained specific conductance of 50 microhms per cm maximum. Filtered to: 10 microns for De-ionised or Distilled. 25 microns for Ethylene Glycol and De-ionised or Water mixture	
<b>FLOW (GPM MIN/GPM MAX)</b>	
ANODE AND CATHODE IN SERIES	4.0/6.0
ANODE SEPERATELY	4.0/6.0
CATHODE SEPERATELY	3.5/6.0
<b>PRESSURE (PSIG)</b>	
MAXIMUM COOLANT PRESSURE AT ANODE INPUT	250
<b>PRESSURE - ANODE AND CATHODE IN SERIES (PSIG)</b>	
MINIMUM DROP ACROSS LAMP	70
NOMINAL ANODE INPUT	120
NOMINAL CATHODE OUTPUT	25
MINIMUM CATHODE OUTPUT	20
<b>PRESSURE - ANODE AND CATHODE SEPERATELY (PSIG)</b>	
MINIMUM DROP ACROSS ANODE	35
NOMINAL ANODE INPUT	120
NOMINAL CATHODE INPUT	70
NOMINAL CATHODE OUTPUT	25
MINIMUM CATHODE OUTPUT	20