

Technical Information

No. FO 4871

Edition: 01/99 - subject to change

Substitutes: Edition --/--

Status: valid

Mercury Short Arc Lamp
for Microlithography

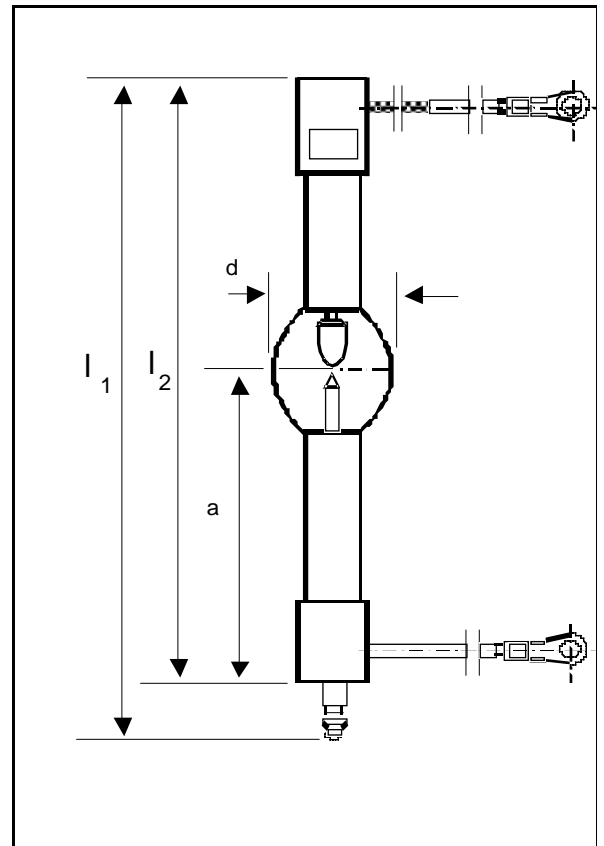
HBO® 2700 W/CIL

n Product description

The OSRAM HBO® 2700 W/CIL is a direct current mercury short arc i-line lamp designed for the manufacture of integrated circuits (microlithography). This lamp type emits a very high radiant intensity in the ultraviolet and visible wavelength range and is especially suited for use in Canon equipment (...).

n Technical data

Order reference		HBO® 2700 W/CIL
Rated lamp wattage	W	2.700
Rated lamp voltage	V	24,5
Rated lamp current (=)	A	110
Ignition voltage (cold)	kV _s	max.
Radiant intensity (wave length range 365 ± 2,5nm)	mW/sr	7.900
Electrode gap e (cold)	mm	
Lamp length (overall) l ₁	mm	332 / max. 334
Lamp length l ₂	mm	307 / max. 309
Bulb diameter d	mm	62
LCL a	mm	148,75
Average service life	h	1.500
Base		<ul style="list-style-type: none">• Cathode: SFa 33,5-14/50• Anode: SF 33,5/50 with cable connector (M8)



n Lamp operation

Maximum permissible base temperature	°C	200
Cooling		forced base cooling
Burning position		vertical, anode (+) up

The HBO® 2700 W/CIL can either be operated on standard ballasts or on electronic power supplies (ECG).

n Safety Instruction

Because their high luminous efficacy, the UV radiation which they emit and the high pressure within the lamp, HBO® lamps must be operated within enclosed, purpose-built housings. When a lamp breaks, mercury is released. Particular safety regulations must be paid attention (for details please request technical information sheet no. FO 4574).